

# Model 33ACS1320

Combination Station, Plastic Bowl  
Eye/Face Wash and Showerhead

## SPECIFICATIONS:

Model 33ACS1320 is a pedestal mounted combination station with an eye/face wash, with a plastic bowl, ABS plastic eye/face wash spray heads, an inline strainer and a stay-open 1/2" ball valve with a push handle and a shower with a plastic showerhead and a 1" stay-open ball valve with a pull rod.

## STANDARD EQUIPMENT:

**Showerhead:** Yellow, ABS plastic 7-3/8" diameter showerhead with a 20 gpm flow regulator. An anti-microbial agent is molded into the ABS material, providing integrated protection.

**Shower Valve:** 1" NPT rough chrome plated brass stay-open ball valve. Unit is provided with a stainless steel actuator arm and a 29" stainless steel pull rod.

**Eye/Face Wash Bowl:** Yellow, ABS plastic 11-3/4" diameter bowl.

**Spray Head Assembly:** ABS yellow plastic eye/face wash heads with integral flip dust covers, internal flow controls and filters to remove debris from the water. An anti-microbial agent is molded into the ABS material, providing integrated protection.

**Eye/Face Wash Valve:** 1/2" NPT chrome plated brass stay-open ball valve with a stainless steel push handle and a 50 mesh inline strainer.

**Water Supply:** 1-1/4" NPT female threaded side or top inlet.

**Waste:** 1-1/4" NPT female outlet.

**Piping & Mounting:** Schedule 40 galvanized steel piping and a 9-1/8" diameter cast iron floor flange with a yellow powder coated finish.

**Universal Sign:** ANSI compliant, vertical identification sign.

**Weekly Test Tag:** A waterproof test card to record the date and inspector's name for weekly functional testing of the unit.

Product carries the following certifications:



Test rating conditions are compliant to ANSI Z358.1



Recyclable Product

o Model: 33ACS1320



## OPTIONAL ACCESSORIES:

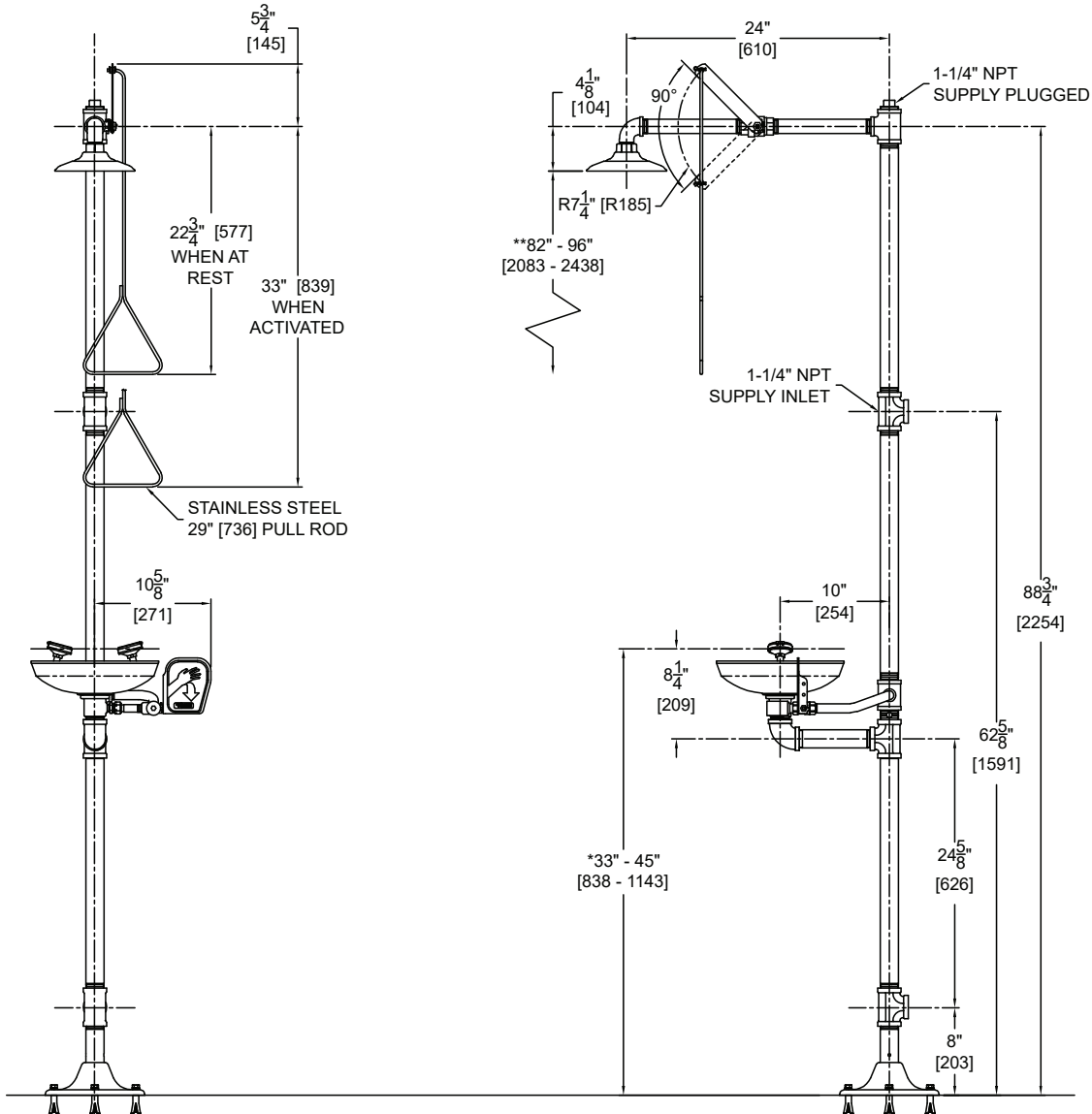
Additional costs may be incurred

- o -AL2 Electric alarm with flashing light and horn
- o -BF Barrier free, handicap accessible
- o -ET71-2-BVS-OTG Thermostatic mixing valve is ASSE Listed per the ASSE 1071 standard. The tepid output water complies with ANSI Z358.1 standard. Valve includes Ball Valve Shut-offs and Outlet Temperature Gauge
- o -FLW1 Flow switch, single pole
- o -FPV Freeze protection valve (eye/face wash only)
- o -HFC Hand foot control
- o -MC1 Modesty curtain for horizontal showers
- o -MS1 MAP (magnetically actuated proximity) switch, for one (1) actuator
- o -MS2 MAP (magnetically actuated proximity) switches, for two (2) actuators
- o -SDC Stainless steel dust covers
- o -SPV Scald protection valve (eye/face wash only)
- o -SV1 Stainless steel 1" ball valve
- o -SV2 Stainless steel 1/2" ball valve
- o "1" Auxiliary hand-held drench hose with a self-closing valve (Use model S1321)

## TECHNICAL DIMENSIONS

All dimensions are subject to manufacturer's tolerance of plus or minus 1/2" nominal and subject to change without notice. Acorn Safety® assumes no responsibility for use of void or superseded data. Dimensions may change with the addition of optional accessories. © Acorn Safety®, A Division of Acorn Engineering Company®, Member of Morris Group International™. Please visit [www.acorneng.com](http://www.acorneng.com) for most current specifications.

### Model 33ACS1320 : Combination Station, Plastic Bowl Eye/Face Wash and Showerhead



#### GENERAL NOTES:

1. ALL DIMENSIONS ARE IN INCHES [MM].

\*2. ANSI Z358.1 REQUIRES NOZZLES TO BE BETWEEN 33" - 45" [838 - 1143] ABOVE THE FINISHED FLOOR.

\*\*3. ANSI Z358.1 REQUIRES THE SHOWER HEAD TO BE MOUNTED BETWEEN 82" - 96" [2083 - 2438] ABOVE THE FINISHED FLOOR WITH A 16" [406] MINIMUM RADIUS UNOBSTRUCTED.

4. ANSI Z358.1 REQUIRES PULL ROD TO BE MOUNTED NO MORE THAN 69" [1752] FROM THE FINISHED FLOOR.

**33ACS1320** Date: 03/13/18